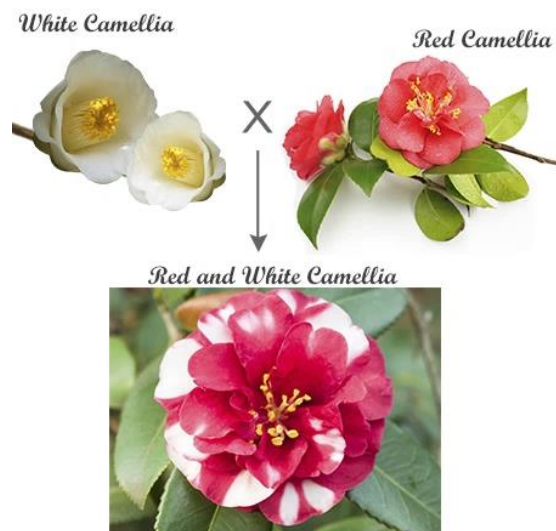
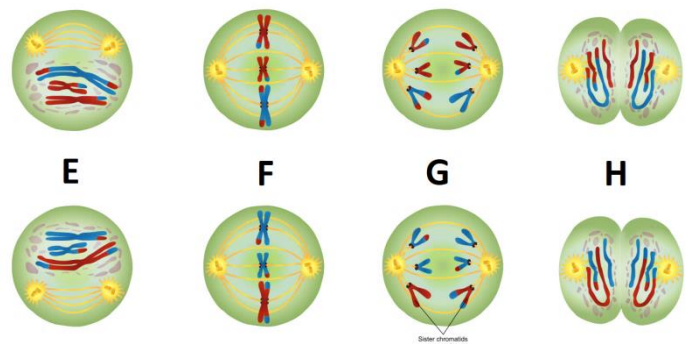
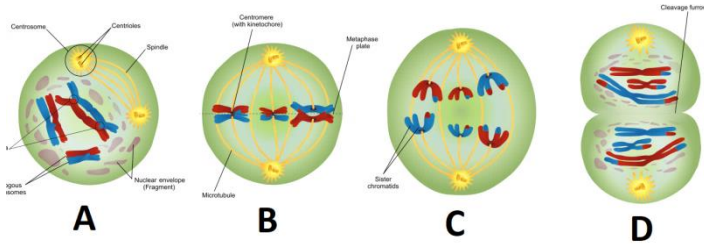
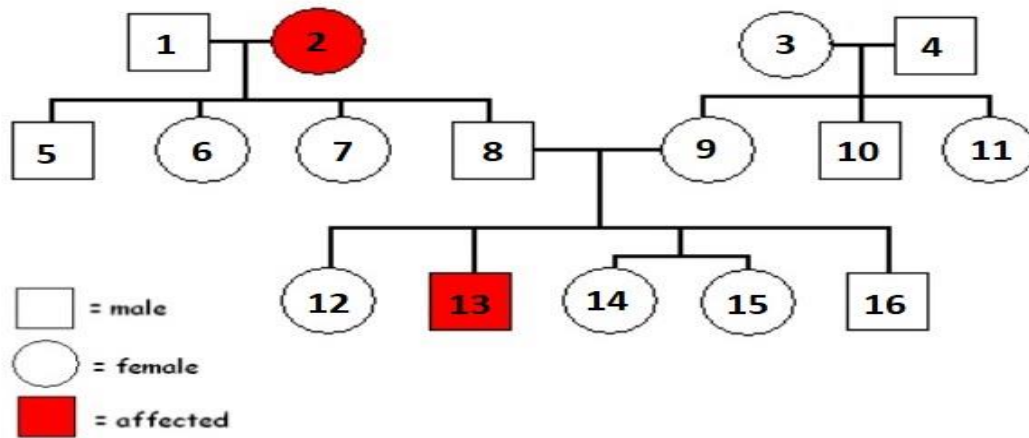


Data for Biology Test 3-24 (Retake)

Genetics – Std 3/Obj's 2 & 4

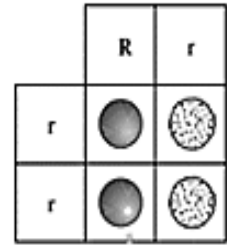
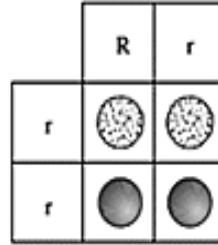
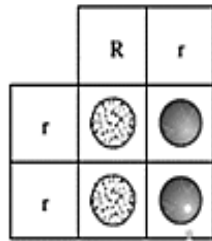
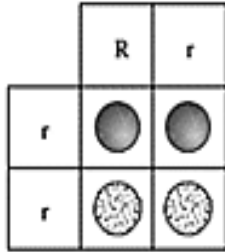


In pea plants, when seeds are formed, the regular allele, R, is dominant over the wrinkled allele, r.

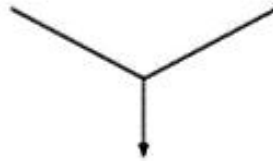
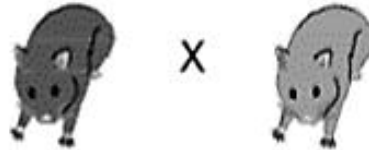
Regular Seed Appearance



Wrinkled Seed Appearance



Brown Hamster (♂) Golden Hamster (♀)



Brown Hamster Offspring

