

Skeletal

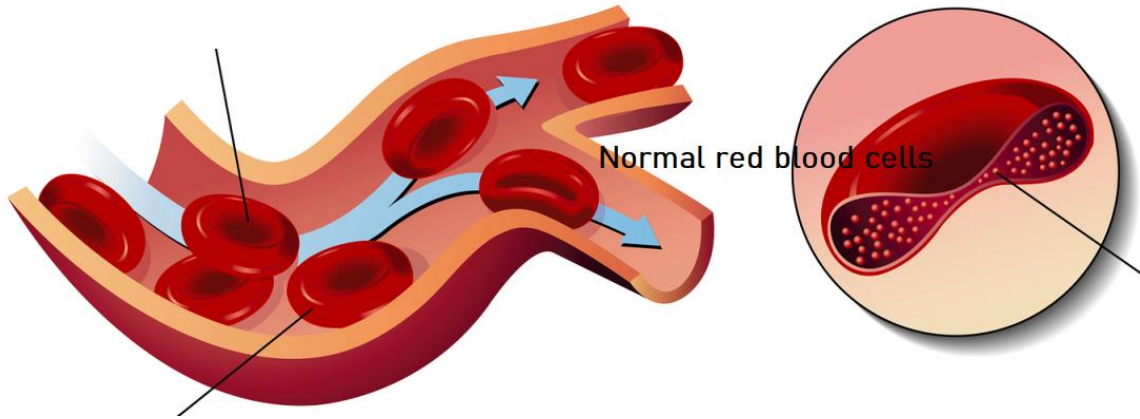


Cardiac



Smooth

Normal red blood cells have a shape that allows them to carry oxygen through the arteries to all the cells of the body. This is an image of normal red blood cells travelling through a human's cardiovascular system.



Some humans are born with a genetic red blood cell disorder known as "Sickle Cell Anemia." Humans with this disorder produce "sickle" shaped red blood cells. This is an image of sickle-shaped red blood cells travelling through a human's cardiovascular system.

